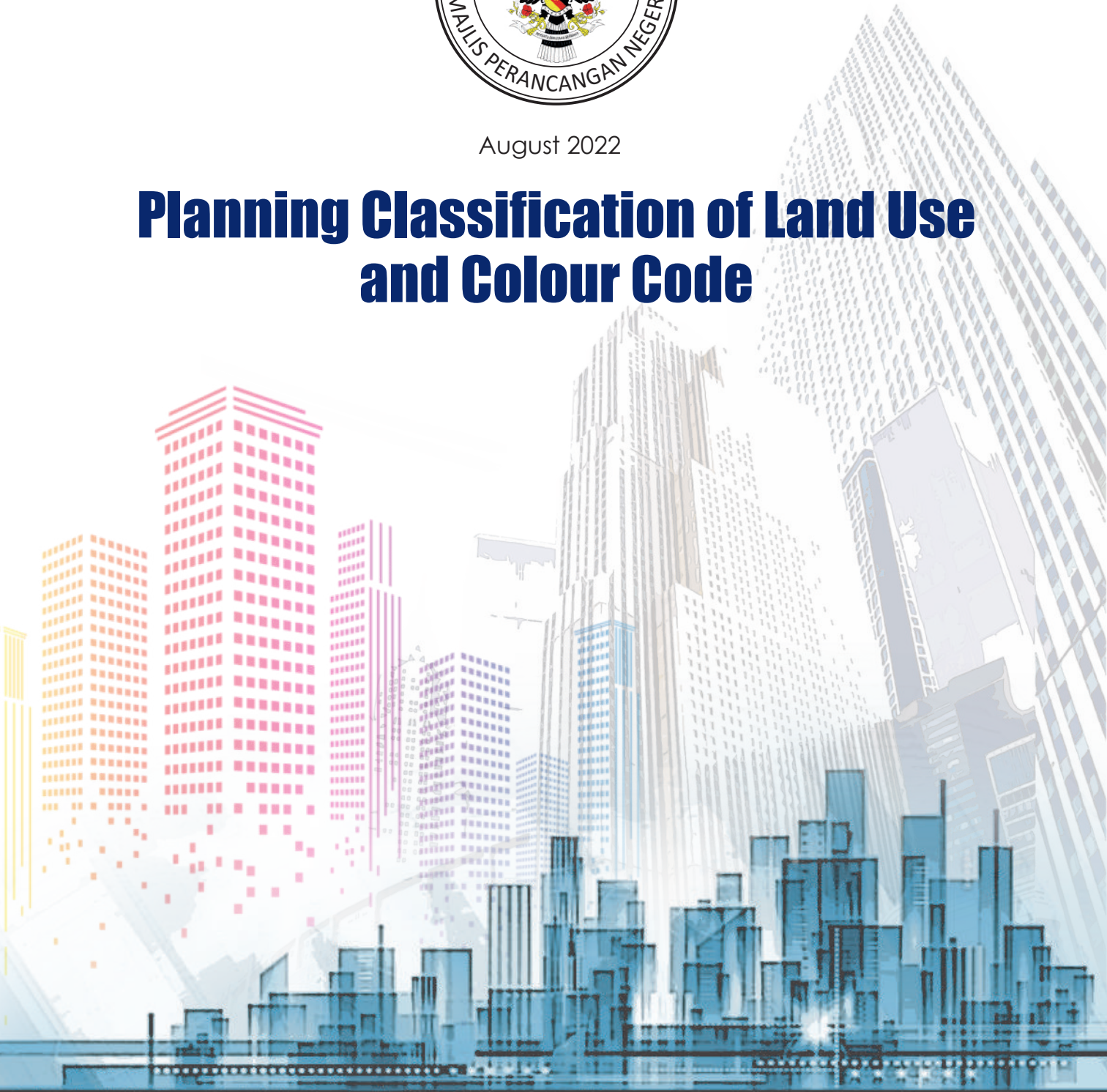




August 2022

Planning Classification of Land Use and Colour Code



All rights reserved.

No part of this document may be reproduced, stored in a retrieval system, or transmitted in any form or by any means, electronic, mechanical, photocopying, recording, or otherwise, without the prior written permission from State Planning Authority, Sarawak Government



Contents

1.0	Purpose	2
2.0	Background	2
3.0	Planning Classification of Land Use and Colour Code	3
3.1	Residential	5
3.2 (a)	Commercial	7
3.2 (b)	Commercial and Mixed Development	8
3.3 (a)	Industrial	10
3.3 (b)	Industrial	11
3.3 (c)	Industrial	12
3.4 (a)	Institution & Public Facilities	14
3.4 (b)	Institution & Public Facilities	15
3.5	Open Space & Recreation Area and Road & Transportation	17
3.6	Infrastructure & Utilities	19
3.7 (a)	Agriculture	21
3.7 (b)	Agriculture	22
3.8	Forest, Water Body and Beach	24



1.0 PURPOSE

The purpose of this **Planning Classification Of Land Use and Colour Code** is to revise and update the Land Use Classification as listed in the State Planning Authority Manual, 1999.

2.0 BACKGROUND

The Ministry of Natural Resources and Urban Development is the Ministry responsible for land administration, town planning and natural resource management for the State of Sarawak. Prior to the year 2018, the tasks of plan preparation for town planning purposes were carried out manually. As a result, development plans are in various formats and are often saved in .jpeg files which lack the attributes for data analytics.

In 2016, the Ministry had embarked on the development of the **Sarawak Planning Development Management System (SPDMS)** to digitalized work processes for town planning purposes. The digital delivery system approach and the Smart Cities initiatives as outlined in the Sarawak Digital Economy Strategy (2018-2022) gave further impetus to the efforts to fully digitalized work processes and outcomes. It is therefore timely all parties involved in plan preparation follow a set of rules and standards to ensure plans prepared can be compiled, integrated and analyzed.



3.0 PLANNING CLASSIFICATION OF LAND USE AND COLOUR CODE

This guideline is a guide to standardize data attributes of land use codes, land use category codes and colour coding plan to facilitate the implementation of the new Development Plan Framework which will work with Geographic Information System Mapping (GIS) format data that will include but not limited to existing land uses, demography, infrastructure, and environment. Each study or plan will need to develop its own GIS database, and these are to be standardized with reference to **State Planning Authority Ministry Of Natural Resources And Urban Development SPA Circular No. 3/2022**.

The aforesaid codes are currently being used in submission for planning applications in Electronic State Planning Authority System (eSPA System) and to be further expanded in development plan preparation. Such standardization will facilitate land use data analysis and projections. The codes are as shown in **Table 3.1 to 3.8**.



Residential





Table 3.1 Residential

PLANNING CLASSIFICATION OF LAND USE						COLOUR CODE			
Code	Land Use Category 1	Code	Land Use Category 2	Code	Land Use Category 3	R	G	B	
RESIDENTIAL									
RS 000	RESIDENTIAL	RS 100	Housing	RS 101	Detached House	255	161	122	
				RS 102	Terraced House				
				RS 103	Semi-Detached House				
				RS 104	Quadrant Dwelling House				
				RS 105	Linked House				
				RS 106	Town House				
				RS 107	Flat				
				RS 108	Apartment				
				RS 109	Condominium				
				RS 110	Quarters (Government)				
				RS 111	Quarters (Private)				
RS 199	Other Residential								
RS 000	RESIDENTIAL	RS 200	Kampung	RS 201	Traditional Village	205	149	117	
				RS 202	Long House				
				RS 203	Agriculture Scheme Housing				
				RS 204	Squatters Housing				
				RS 299	Other Kampung				

2nd Layer (Category For Housing)	SPEKTRA Lite			SPEKTRA Medium			PUTERA House			PRIMA			PPR		
	HSC211			HSC212			HSC214			HCS221			HCS223		
	R	G	B	R	G	B	R	G	B	R	G	B	R	G	B
Detached House															
Terraced House															
Semi-Detached House															
Quadrant Dwelling House															
Linked House															
Town House	255	127	127	255	159	127	255	175	127	255	127	0	255	191	127
Flat															
Apartment															
Condominium															
Quarters (Government)															
Quarters (Private)															
Other Residential															



Commercial



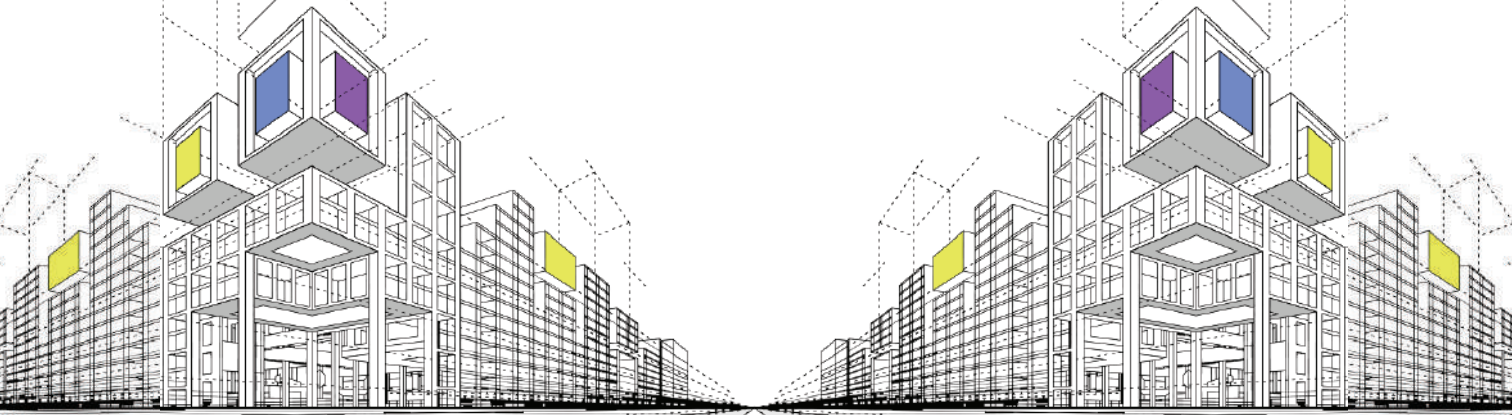


Table 3.2 (a) Commercial

PLANNING CLASSIFICATION OF LAND USE						COLOUR CODE			
Code	Land Use Category 1	Code	Land Use Category 2	Code	Land Use Category 3	R	G	B	
C O M M E R C I A L									
CR 000	COMMERCIAL	CR 100	Shop Lot	CR 101	Commercial	31	117	255	
				CR 102	Commercial Residential				
				CR 103	Commercial Residential Office				
				CR 104	Commercial Office				
				CR 199	Other Shop Lot				
CR 000	COMMERCIAL	CR 200	Commercial Lot	CR 201	Hotel	137	207	240	
				CR 202	Service Apartment				
				CR 203	Lodging House/ Inn/ Hostel / Resthouse				
				CR 204	Bank				
				CR 205	Resort				
				CR 206	Golf Course				
				CR 207	Theme Park				
				CR 208	Car Park				
				CR 209	Private Sport Facilities				
				CR 210	Private Recreation / Camp				
				CR 211	Clubhouse				
				CR 212	Marina				
				CR 213	Food Court				
				CR 214	Restaurant				
				CR 215	Drive Thru Restaurant				
				CR 216	Driving School				
				CR 217	Petrol Filling Station				
				CR 218	Wholesale Market				
				CR 219	Market				
				CR 220	Tamu/Pasar Malam				
				CR 221	Showroom				
				CR 222	Private Childcare Centre				
				CR 223	Private Kindergarten				
				CR 224	Tuition Centre				
				CR 225	Private Primary and / or Secondary School				
				CR 226	Private Special Needs School (Handicap)				
				CR 227	Private University/ College				
				CR 228	Private Elder Care				
				CR 229	Private Cemetery				
				CR 230	Entertainment Centre				
CR 231	Cinema / Cineplex / Theatre								
CR 232	Health & Beauty Centre								
CR 233	Private Hospital								
CR 234	Private Clinic								
CR 235	Supermarket								
CR 236	Hypermarket								
CR 237	Convention & Exhibition Centre								
CR 238	Plant Nursery								
CR 239	Office								
CR 240	SOHO/SOFO/SOVO								
CR 299	Other Commercial Lot								



Table 3.2 (b) Commercial & Mixed Development

PLANNING CLASSIFICATION OF LAND USE							COLOUR CODE			
Code	Land Use Category 1	Code	Land Use Category 2	Code	Land Use Category 3	R	G	B		
COMMERCIAL										
CR 000	COMMERCIAL	CR 300	Commercial Complex	CR 301	Hotel	13	152	186		
				CR 302	Service Apartment					
				CR 303	Apartment					
				CR 313	Bank					
				CR 314	Theme Park					
				CR 315	Multi-Storey Car Park					
				CR 316	Private Sport Facilities					
				CR 317	Clubhouse					
				CR 318	Marina					
				CR 319	Food Court					
				CR 320	Restaurant					
				CR 321	Wholesale Market					
				CR 322	Showroom					
				CR 323	Private Childcare Centre					
				CR 324	Private Kindergarten					
				CR 325	Tuition Centre					
				CR 326	Private Primary and / or Secondary School					
				CR 327	Private Special Needs School (Handicap)					
				CR 328	Private University/ College					
				CR 329	Private Elder Care					
CR 330	Private Library									
CR 331	Entertainment Centre									
CR 332	Cinema / Cineplex / Theatre									
CR 333	Health & Beauty Centre									
CR 334	Private Clinic									
CR 335	Supermarket									
CR 336	Hypermarket									
CR 337	Office									
CR 338	SOHO/SOFO/SOVO									
CR 399	Other Commercial Complex									
CR 000	COMMERCIAL	CR 400	Office	CR 401	SOHO/SOFO/SOVO	46	89	148		
				CR 402	Office					
				CR 403	Office_Residential					
				CR 499	Other Office					
MIXED DEVELOPMENT										
MX 000	MIXED DEVELOPMENT	MX 100	Mixed Development	MX 101	Commercial_Residential	138	73	107		
				MX 102	Commercial_Industry					
				MX 103	Commercial_Residential_Industry					
				MX 104	Commercial_Institution & Public Facilities					
				MX 105	Commercial_Residential_Institution & Public Facilities					
				MX 106	Commercial_Residential_Industry_Institution & Public Facilities					
MX 199	Other Mixed Development									

Industrial

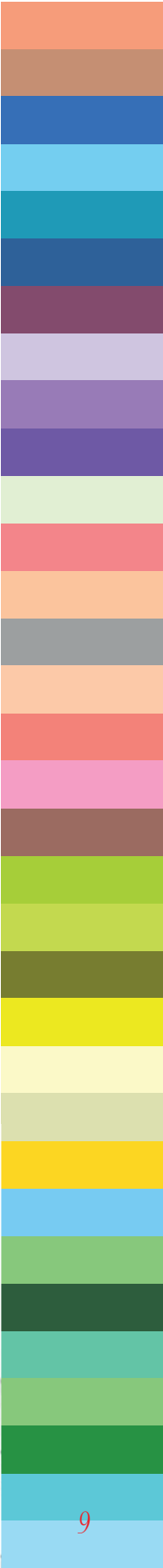




Table 3.3 (a) Industrial

PLANNING CLASSIFICATION OF LAND USE							COLOUR CODE			
Code	Land Use Category 1	Code	Land Use Category 2	Code	Land Use Category 3	R	G	B		
INDUSTRIAL										
IN 000	INDUSTRIAL	IN 100	Light Industry	IN 101	Fish Processing Factory	220	208	255		
				IN 102	Cocoa Processing Factory					
				IN 103	Sago Processing Factory					
				IN 104	Rubber Processing Factory					
				IN 105	Aerated Water Factory					
				IN 106	Pottery Factory					
				IN 107	Cooking Oil Processing Factory					
				IN 108	Plastic Factory					
				IN 109	Soap Manufacturing Factory					
				IN 110	Sauce Processing Factory					
				IN 111	Carpentry Workshop					
				IN 112	Paper Mill					
				IN 113	Feed Mill					
				IN 114	Rice Mill					
				IN 115	Brick Kiln					
				IN 116	Charcoal Kiln					
				IN 117	Smokehouse					
				IN 118	Paper Processing Factory					
				IN 119	Tea Processing Factory					
				IN 120	Silk Processing Factory					
				IN 121	Slaughter House					
				IN 122	Tinsmith					
				IN 123	Rice Mill And Rubber Scrap Mill					
				IN 124	Processing Fish And Manufacture Of Animal Foodstuffs					
				IN 125	Alcohol Distillery					
				IN 126	Workshop					
				IN 127	Off Loading And Stockpile					
				IN 128	Furniture Workshop					
				IN 129	Fish Drying And Cooking Purposes					
				IN 130	Fish Drying And Prawn Processing					
				IN 131	Coconut Oil Mill					
				IN 132	Sago Grinding Mill					
				IN 133	Palm Oil Mill					
IN 134	Sago Factory Effluent Discharge Store									
IN 135	Rubber Scrap Mill									
IN 136	Oil Terminal									
IN 137	Sawdust Briquette Charcoal & Biomass Pellet									
IN 138	Hardware, Lightware Store									
IN 139	Poultry Processing Factory									
IN 140	Warehouse									
IN 141	Printing & Publishing Industries									
IN 142	Packaging Industry									
IN 199	Other Light Industry									



Table 3.3 (b) Industrial

PLANNING CLASSIFICATION OF LAND USE						COLOUR CODE			
Code	Land Use Category 1	Code	Land Use Category 2	Code	Land Use Category 3	R	G	B	
INDUSTRIAL									
IN 000	INDUSTRIAL	IN 200	Heavy Industry	IN 201	Oil Terminal	181	126	220	
				IN 203	Shipyards				
				IN 204	Sawmill				
				IN 205	Mechanical Workshop				
				IN 206	Steel Mill				
				IN 207	Scrap Yard				
				IN 208	Car Assembly Plant				
				IN 209	Cement Factory				
				IN 210	Urea Plant				
				IN 211	Oil Refinery Plant				
				IN 212	Ice Factory				
				IN 213	Glass Manufacturing Factory				
				IN 214	Printing Press				
				IN 215	Garage				
				IN 216	Quarry				
				IN 217	Oil Depot/Oil Store				
				IN 218	Plywood Factory				
				IN 219	Timber Processing				
				IN 220	Log Pond/Depot				
				IN 221	Explosive Store				
				IN 222	Gravel Pit				
				IN 223	Cold Storage				
				IN 224	Timber Treatment Plant				
				IN 225	Timber Storage				
				IN 226	Premix Plant				
				IN 227	Timber Depot And Storage Of Sawn Timber				
				IN 228	Timber Industrial				
				IN 229	Sago Factory And Timber Sawmill				
				IN 230	Storage And Distribution Of Fuel Oils And Lubricants				
				IN 231	Storage And Distribution Of Fuel Oil				
				IN 232	Storage Of Kerosene, Benzene And Other Inflammatory				
				IN 233	Logging Camp				
				IN 234	Petroleum Depot				
IN 235	Veneer Mill								
IN 236	Garage/Service Of Shaft								
IN 237	Oil Recycling Plant								
IN 238	Effluent Treatment Plant								
IN 239	Manganese Smelting Plant								
IN 240	Manganese Alloy Smelting Plant								
IN 241	Coal-Fired Power Station								
IN 242	Ferro Alloy Smelting Plant								
IN 243	Gas Plant								
IN 244	Soderberg Electrode Paste Plant								
IN 245	Sawmill And Plywood Mill								
IN 246	Poly-Silicon Manufacturing Plant								
IN 299	Other Heavy Industry								



Table 3.3 (c) Industrial

PLANNING CLASSIFICATION OF LAND USE							COLOUR CODE			
Code	Land Use Category 1	Code	Land Use Category 2	Code	Land Use Category 3	R	G	B		
INDUSTRIAL										
IN 000	INDUSTRIAL	IN 300	Cottage Industry	IN 301	Tailoring Industry	120	81	169		
				IN 302	Handicraft Industry					
				IN 303	Bakery					
				IN 304	Snacks Industry					
				IN 305	Ceramics Industry					
				IN 399	Other Cottage Industry					

Institution & Public Facilities

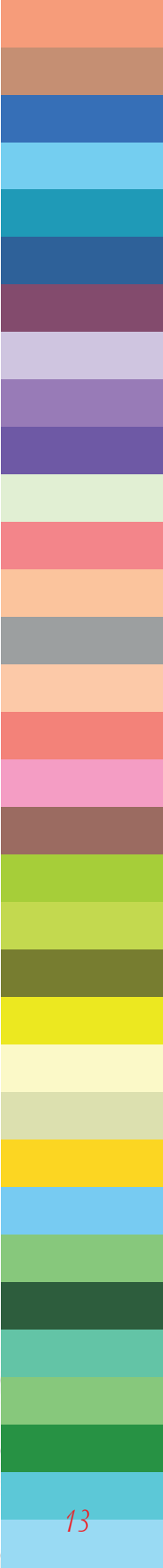




Table 3.4 (a) Institution & Public Facilities

PLANNING CLASSIFICATION OF LAND USE							COLOUR CODE			
Code	Land Use Category 1	Code	Land Use Category 2	Code	Land Use Category 3	R	G	B		
INSTITUTION & PUBLIC FACILITIES										
PF 000	INSTITUTION & PUBLIC FACILITIES	PF 100	Education	PF 101	Childcare Centre	233	255	219		
				PF 102	Kindergarten					
				PF 103	Primary School					
				PF 104	Secondary School					
				PF 105	School For Special Needs					
				PF 106	University/ College/ Polytechnic/ Maktab					
				PF 199	Other Education					
PF 000	INSTITUTION & PUBLIC FACILITIES	PF 200	Health	PF 201	Hospital	255	135	140		
				PF 202	Polyclinic					
				PF 203	Rural Clinic					
				PF 204	Mother & Child Clinic					
				PF 205	Dental Clinic					
				PF 299	Other Health					
				PF 000	INSTITUTION & PUBLIC FACILITIES				PF 300	Religious
PF 302	Mosque									
PF 303	Chinese Temple									
PF 304	Indian Temple									
PF 305	Church / Chapel									
PF 399	Other Religious									
PF 000	INSTITUTION & PUBLIC FACILITIES	PF 400	Cemetery			PF 401	Islam	168		
				PF 402	Chinese Association					
				PF 403	Christian					
				PF 404	Hindu/Sikh					
				PF 499	Other Cemetery					
PF 000	INSTITUTION & PUBLIC FACILITIES	PF 500	Security	PF 501	Contigent Police Headquarters	251	206	177		
				PF 502	District Police Headquarters					
				PF 503	Community Police Station					
				PF 504	Fire & Rescue Station					
				PF 505	Military Camp					
				PF 506	Training Centre					
				PF 507	Prison & Detention Centre					
				PF 508	Rehabilitation Centre					
				PF 509	Guard House					
				PF 599	Other Security					



Table 3.4 (b) Institution & Public Facilities

PLANNING CLASSIFICATION OF LAND USE						COLOUR CODE			
Code	Land Use Category 1	Code	Land Use Category 2	Code	Land Use Category 3	R	G	B	
INSTITUTION & PUBLIC FACILITIES									
PF 000	INSTITUTION & PUBLIC FACILITIES	PF 600	Government Uses	PF 601	Astana	248	131	121	
				PF 602	Museum				
				PF 603	Gallery				
				PF 604	Government Offices				
				PF 605	Courthouse				
				PF 606	Statutory Offices				
				PF 699	Other Government Uses				
PF 000	INSTITUTION & PUBLIC FACILITIES	PF 700	Public Facilities	PF 701	Public Multipurpose Hall	255	166	201	
				PF 702	Community Hall				
				PF 703	Public Library				
				PF 704	Post Office				
				PF 705	Public Toilet				
				PF 799	Other Public Facilities				
				PF 000	INSTITUTION & PUBLIC FACILITIES				PF 800
PF 802	Elderly Residents								
PF 803	Houses Of The Disabled								
PF 899	Other Welfare Home								

Open Space & Recreation Area Road & Transportation





Table : 3.5 Open Space & Recreation Area and Road & Transportation

PLANNING CLASSIFICATION OF LAND USE							COLOUR CODE			
Code	Land Use Category 1	Code	Land Use Category 2	Code	Land Use Category 3	R	G	B		
OPEN SPACE AND RECREATION AREA										
OP 000	OPEN SPACE & RECREATION AREA	OP 100	Open Space	OP 101	State Park (Public Park)	173	255	47		
				OP 102	Town Park (Public Park)					
				OP 103	Neighbourhood Park (Public Park)					
				OP 199	Other Open Space					
OP 000	OPEN SPACE & RECREATION AREA	OP 200	Sport & Recreation Facilities	OP 201	Stadium	209	226	49		
				OP 202	Mini Stadium					
				OP 203	Sport Complex					
				OP 299	Other Sport & Recreation Facilities					
OP 000	OPEN SPACE & RECREATION AREA	OP 300	Green Area	OP 301	Buffer Zone	128	128	0		
				OP 302	Future Development					
				OP 303	Green Area					
ROAD AND TRANSPORTATION										
TP 000	ROAD AND TRANSPORTATION	TP 100	Road	TP 101	Road Reserve	255	255	0		
				TP 102	Private Road	255	250	205		
				TP 103	Pedestrian Walkway Reserve	255	255	0		
				TP 104	Private Pedestrian Walkway	255	250	205		
TP 000	ROAD AND TRANSPORTATION	TP 200	Land Public Transportation	TP 201	Taxi Station	165	145	82		
				TP 202	Bus Station					
				TP 203	Train/ LRT/ MRT Station					
				TP 204	Integrated Transport Terminals					
				TP 205	Bus Depot					
				TP 206	Train/ LRT/ MRT Depot					
				TP 207	Land Port					
				TP 208	Lorry/ Heavy Machinery Depot					
				TP 209	Train/ LRT/ MRT Railway					
				TP 299	Other Land Public Transportation					
TP 000	ROAD AND TRANSPORTATION	TP 300	Water Transportation	TP 301	Seaport/ Cargo Transfer Station	255	216	0		
				TP 302	Ferry Terminal/ Boat					
				TP 303	Jetty					
				TP 399	Other Water Transportation					
TP 000	ROAD AND TRANSPORTATION	TP 400	Air Transportation	TP 401	Airport	255	216	0		
				TP 402	Terminal Cargo					
				TP 499	Other Air Transportation					



Infrastructure & Utilities



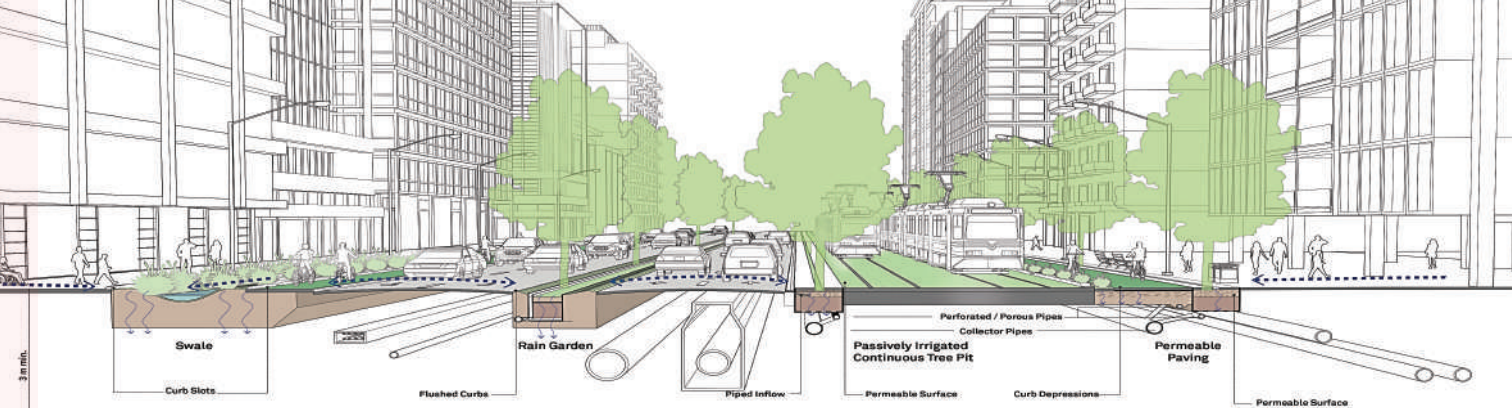


Table 3.6 Infrastructure & Utilities

PLANNING CLASSIFICATION OF LAND USE							COLOUR CODE			
Code	Land Use Category 1	Code	Land Use Category 2	Code	Land Use Category 3	R	G	B		
INFRASTRUCTURE & UTILITIES										
IF 000	INFRASTRUCTURE & UTILITIES	IF100	Electricity	IF101	Transmission Line	255	255	255		
				IF102	Power Plant					
				IF103	Electrical Substations					
				IF199	Other Electricity					
IF 000	INFRASTRUCTURE & UTILITIES	IF 200	Gas & Petroleum	IF 201	Gas Pipeline	255	255	255		
				IF 202	Gas Distributor Station					
				IF 299	Other Gas & Petroleum					
IF 000	INFRASTRUCTURE & UTILITIES	IF 300	Telecommunication	IF 301	Telecommunication Station	255	255	255		
				IF 302	Telecom Transmitter Tower					
				IF 399	Other Telecommunication					
IF 000	INFRASTRUCTURE & UTILITIES	IF 400	Solid Waste Disposal	IF 401	Solid Waste Treatment Centre	255	255	255		
				IF 402	Incinerator					
				IF 403	Dumping Site					
				IF 404	Collection Centre Site					
				IF 405	Recycle Centre					
				IF 406	Bin Centre					
				IF 499	Other Solid Waste Disposal					
IF 000	INFRASTRUCTURE & UTILITIES	IF500	Scheduled Waste Management	IF 501	Treatment Plant	255	255	255		
				IF 502	Incinerator					
				IF 503	Exchange Centre					
				IF 599	Other Scheduled Waste Management					
IF 000	INFRASTRUCTURE & UTILITIES	IF 600	Sewerage	IF 601	Sewage Treatment Plant	255	255	255		
				IF 602	Oxidation Pond					
				IF 699	Other Sewerage					
IF 000	INFRASTRUCTURE & UTILITIES	IF 700	Water Supply	IF 701	Hydro Electric Power Dam	135	207	250		
				IF 702	Water Supply Dam					
				IF 703	Pipeline					
				IF 704	Water Treatment Plant					
				IF 705	Pump House					
				IF 706	Water Tank					
				IF 799	Other Water Supply					
IF 000	INFRASTRUCTURE & UTILITIES	IF 800	Irrigation & Drainage	IF 801	Reservoir	135	207	250		
				IF 802	Detention Pond					
				IF 803	Pump Station					
				IF 804	Earth Drain					
				IF 805	Monsoon Drain					
				IF 806	Road Concrete Drain					
				IF 899	Other Irrigation & Drainage					
IF 000	INFRASTRUCTURE & UTILITIES	IF 900	Other Infrastructure	IF 901	Pipeline Reserve	255	255	255		

Agriculture





Table 3.7 (a) Agriculture

PLANNING CLASSIFICATION OF LAND USE						COLOUR CODE			
Code	Land Use Category 1	Code	Land Use Category 2	Code	Land Use Category 3	R	G	B	
AGRICULTURE									
AG 000	AGRICULTURE	AG 100	Crops	AG 101	Paddy	147	197	114	
				AG 102	Pepper				
				AG 103	Sago				
				AG 104	Oil Palm				
				AG 105	Rubber				
				AG 106	Coconut				
				AG 107	Cocoa				
				AG 108	Tea				
				AG 109	Fruit Trees				
				AG 110	Vegetable				
				AG 111	Mushroom				
				AG 112	Bamboo Groves				
				AG 113	Coconut				
				AG 114	Vegetables				
				AG 115	Tobacco				
				AG 116	Oranges				
				AG 117	Coffee				
				AG 118	Pinang				
				AG 119	Plant Nursery				
				AG 120	Tongkat Ali				
AG 121	Tapioca								
AG 122	Orchard								
AG 123	Maize								
AG 124	Cotton								
AG 125	Pineapple								
AG 126	Rattan								
AG 127	Banana								
AG 128	Jatropha								
AG 129	Sugar Cane								
AG 130	Spices								
AG 131	Herbs								
AG 132	Flowers								
AG 133	Mulberry								
AG 134	Horticulture								
AG 135	Crop Nursery								
AG 198	Mixed Crops								
AG 199	Other Crops								



Table 3.7 (b) Agriculture

PLANNING CLASSIFICATION OF LAND USE							COLOUR CODE			
Code	Land Use Category 1	Code	Land Use Category 2	Code	Land Use Category 3	R	G	B		
AGRICULTURE										
AG 000	AGRICULTURE	AG 200	Livestock	AG 201	Cattle	54	94	59		
				AG 202	Sheep					
				AG 203	Pig Farm					
				AG 204	Chicken					
				AG 205	Duck					
				AG 206	Bird					
				AG 207	Crocodile Farm					
				AG 208	Buffalo					
				AG 209	Ostrich Farm					
				AG 210	Dairy Farm					
				AG 211	Silk Worm					
				AG 212	Bee Farm					
				AG 213	Swiflet Farm					
				AG 214	Grazing Land					
AG 299	Other Livestock									
AG 000	AGRICULTURE	AG 300	Aquaculture	AG 301	Prawn Farming	102	205	170		
				AG 302	Fish Farming					
				AG 303	Cockle Farming					
				AG 304	Crab Farming					
				AG 399	Other Aquaculture					
AG 000	AGRICULTURE	AG 400	Mixed Agriculture	AG 401	Mixed Agriculture	147	197	114	MX	

Forest, Water Body & Beach

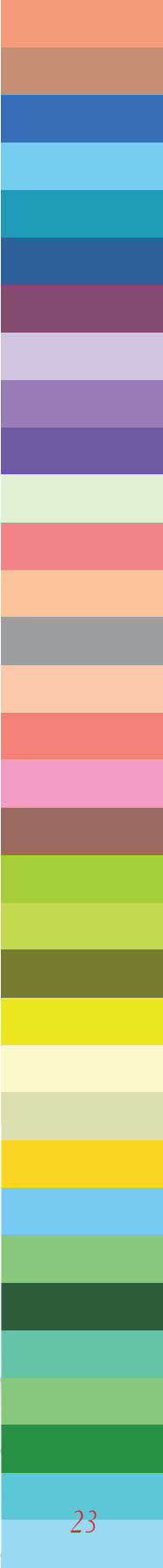




Table 3.8 Forest, Water Body and Beach

PLANNING CLASSIFICATION OF LAND USE							COLOUR CODE			
Code	Land Use Category 1	Code	Land Use Category 2	Code	Land Use Category 3	R	G	B		
FOREST										
FS 000	FOREST	FS100	Forest	FS 101	National Park	34	139	34		
				FS 102	Nature Reserve					
				FS 103	Wildlife Sanctuary					
				FS 199	Other Forest					
WATER BODY										
WB 000	WATER BODY	WB 100	Natural Water Body	WB 101	River	0	255	255		
				WB 102	Lake					
				WB 103	Sea					
				WB 199	Other Natural Water Body					
WB 000	WATER BODY	WB 200	Manmade Water Body	WB 201	Ex-mining Area	0	255	255		
				WB 202	Recreation Lake					
				WB 299	Other Manmade Water Body					
BEACH										
BC 000	BEACH	BC 100	Beach	BC 101	Beach	166	232	255		





Legal, Research and Planning Information Section,
Planning Division

Ministry of Natural Resources and Urban Development

Tingkat 3, 15 & 16 Wisma Sumber Alam,
Jalan Stadium, Petra Jaya,
93050 Kuching, Sarawak.

+082-313811/ +082-313823 (Tel)

+082-313810 (Fax)

<https://kpbsa.sarawak.gov.my>